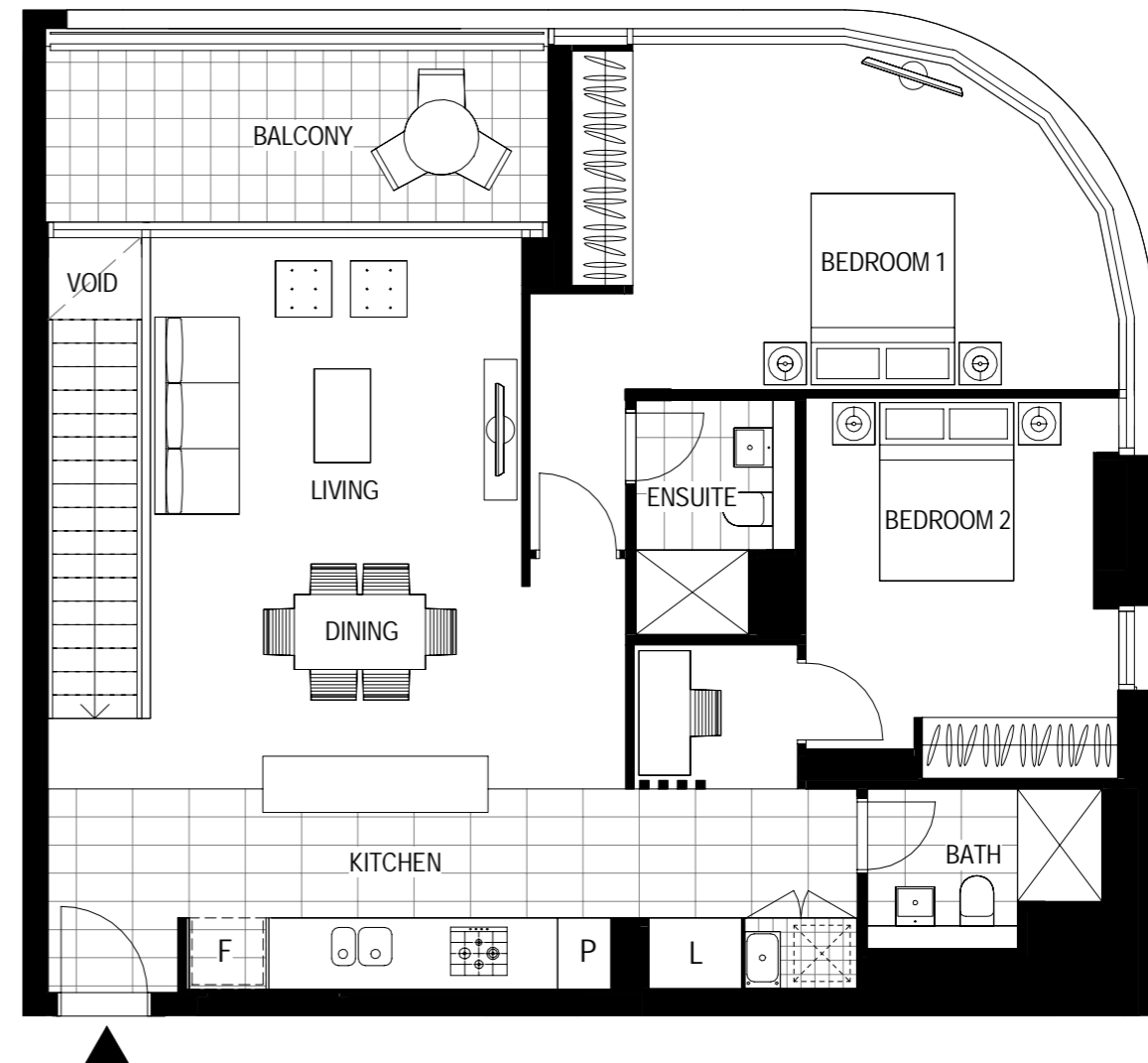


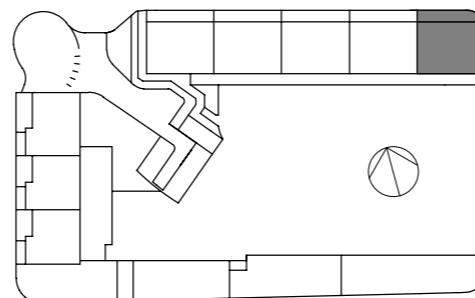
LEVEL 1



LEVEL 2

FMU 1.11

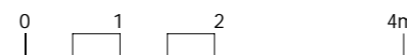
LOCATION PLAN



**FLEXI APARTMENTS  
2 BEDROOM/ 3 BEDROOM  
+ MEDIA APARTMENT**

Internal Area	212 m <sup>2</sup>
Balcony Area	29 m <sup>2</sup>
<b>Total Area</b>	<b>241 m<sup>2</sup></b>

Areas subject to final survey, area includes balcony and/or terrace where applicable. It excludes parking and external storage areas.



**IMPORTANT NOTICE**  
Please note that this floor plan was produced prior to completion of Construction. The information contained herein is believed to be correct but is not guaranteed. Dimensions and areas are approximate and areas are calculated in accordance with the Property Council of Australia Method of Measurement. Floor plans do not show additional features within each lot such as hot water systems, service yards, letterboxes and side and rear retaining walls. Purchaser option noted on floor plans is located on some lots only and is available at purchaser cost only at time of sale. Changes will undoubtedly be made during development and subject to change without notice in accordance with the provisions of the contract for sale. Special condition 10 of the contract for sale includes further information in relation to the size of the lot to be transferred. The furniture and furnishings depicted are not included with any sale and furnishings should not be taken to indicate the final position of power points, TV connection points and the like, prospective purchasers must refer to the contract for sale for the list of inclusions. All graphics, including tile layout, balustrades, planting, louvres and sun shading devices, are intended as a guide only and are not to be relied on as representative of the final product. Bulkheads necessary for services are not depicted.

10/11/2015 [A]

For further enquiries  
call 03 9695 9400 or visit  
[Voyager.mirvac.com](http://Voyager.mirvac.com)

